

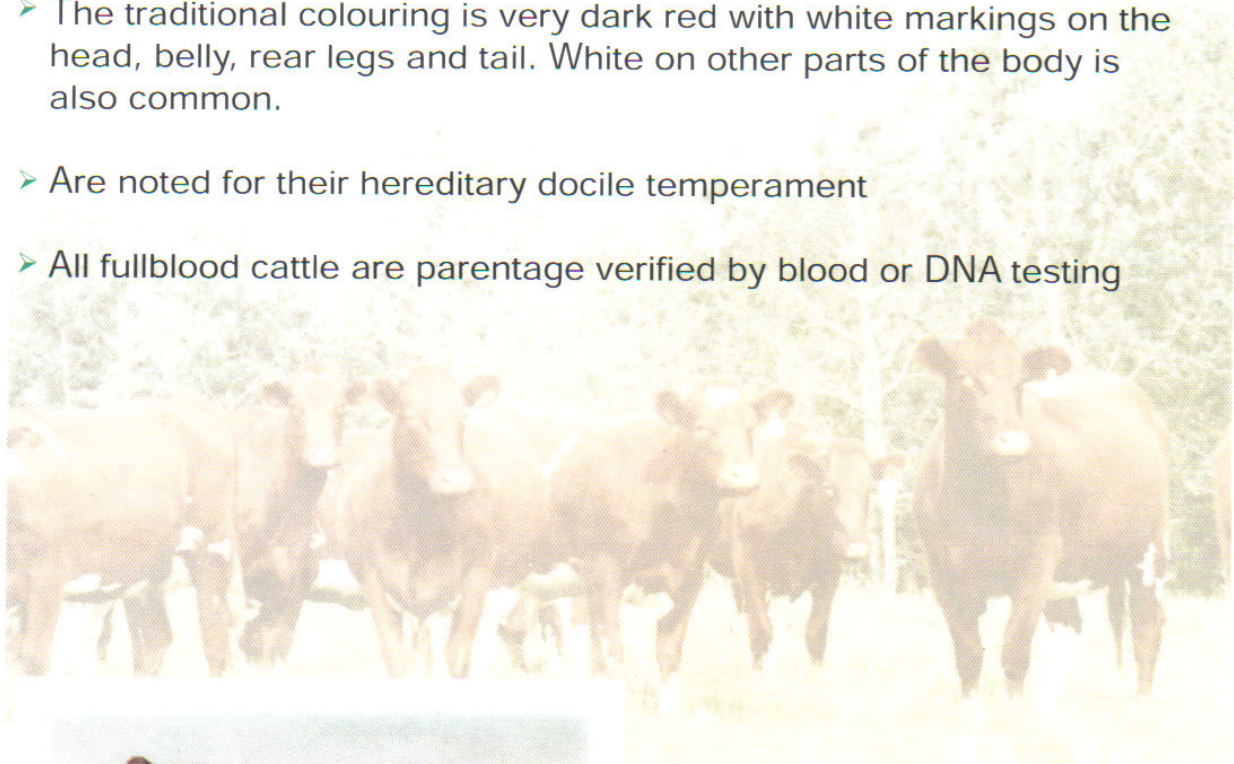
Maine-Anjou

There's no other breed
with as many
perfect options!



Fullbloods

- In France, where the breed originated, Maine-Anjou evolved as a dual-purpose breed, where cows are selected for their milk production, and bull calves are fed for market
- 35 years of selective breeding in Canada have maintained many important fullblood traits while reducing frame size and birth weights
- The traditional colouring is very dark red with white markings on the head, belly, rear legs and tail. White on other parts of the body is also common.
- Are noted for their hereditary docile temperament
- All fullblood cattle are parentage verified by blood or DNA testing



Purebred & Percentage Registered Animals

- Maine-Anjou offer the cattleman years of proven predictability with both females and bulls
- The recessive red gene can be utilized to maintain your preferred colour pattern of solid black, solid red, tan or other colours
 - Polled, Scurred or Horned
- Our parentage verification program ensures the integrity of the Maine-Anjou pedigree



Crossbreeding

The modern traits of the Maine-cross female are in constant demand:

- Their superior maternal ability always delivers
- Dark pigmentation around the eyes when crossed with white-faced cattle.
- Very Maternal, Easy calving, Extreme Longevity



Choose Maines for their Performance

High Feed Efficiency, Super Conversion

The Saskatchewan Beef Cattle Performance Test showed Maine-Anjou feed conversion at 7.74 lbs. of feed/lb. of gain, placing Maines literally pounds ahead of Charolais and Simmental



The University of Guelph's experiment on crossbreeding systems showed Maines had the lowest feed intake relative to weights of cow, calf and milk yield of Charolais, Maine-Anjou, Simmental and Angus

Quiet Disposition



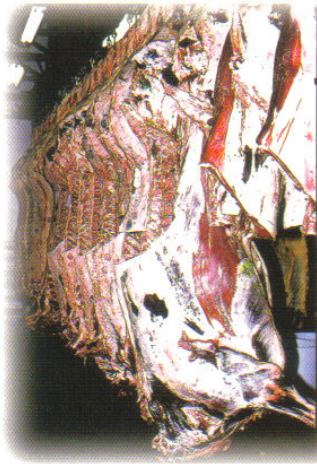
Adaptable to Climatic Extremes



Maines have succeeded from France to Canada to Australia and Mexico

Superior Carcass Quality and High Fertility

Douglas Test Station ran a 5-year breed analysis, culminating in 2003, whose results stated that Maines 365 day weight was 1367 lbs., rib eye area was 1.11 sq. in/100 lbs., Lean Meat Yield 65%, fat at 5.8 mm and scrotal circumference of 36 cm



High Rates of Gain

A summary of 99 beef bull test station reports proved that Maines performance for ADG is unparalleled in the industry. In the 17 tests where Maines participated, they were 1st in ADG in 10 of the tests and 2nd in 4 others. The Maines weighted averages over the total field of 5,300 bulls averaged 3.60 lbs./day ADG, ahead of other breeds



In 15 years at Douglas Test Station Maines have:

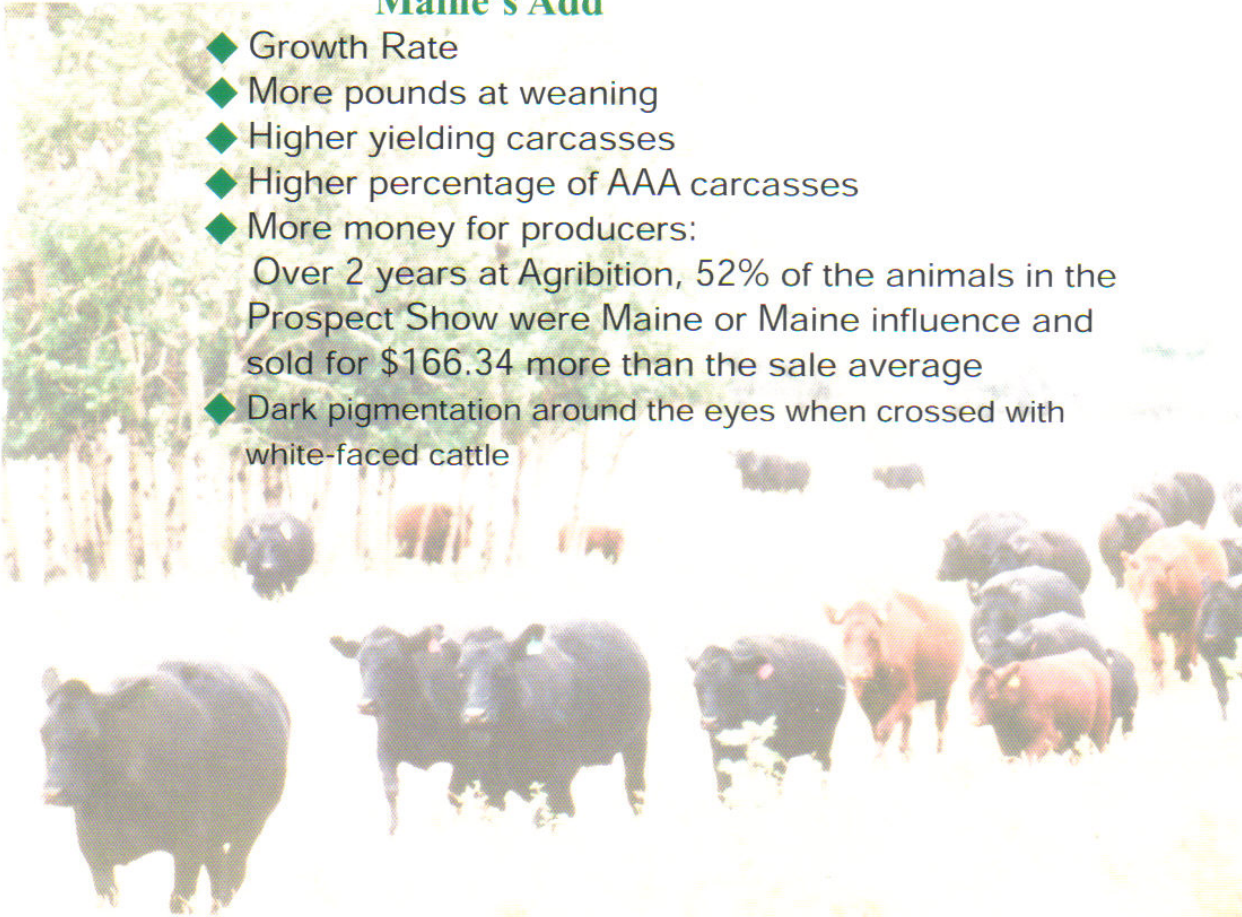
- Had an ADG of 4 or more lbs./day 11 times

- Been either 1st or 2nd in ADG 13 times

- Had a WDA of 3.5 or more lbs./day 12 times

Maine's Add

- ◆ Growth Rate
- ◆ More pounds at weaning
- ◆ Higher yielding carcasses
- ◆ Higher percentage of AAA carcasses
- ◆ More money for producers:
Over 2 years at Agribition, 52% of the animals in the Prospect Show were Maine or Maine influence and sold for \$166.34 more than the sale average
- ◆ Dark pigmentation around the eyes when crossed with white-faced cattle



5160 Skyline Way NE
Calgary, AB T2E 6V1
Ph: 403 - 291-7077
Fax: 403 - 291-0274
cmaa@maine-anjou.ca
www.maine-anjou.ca